

# EG4<sup>®</sup> WallMount 280Ah Indoor

---

## RS485 Update Guide

### OVERVIEW

Please read this guide thoroughly before updating the EG4<sup>®</sup> Electronics battery or batteries. Failure to do so can result in a soft-bricked BMS.



### NOTE:

This is a two-part update. Please refer to the EG4<sup>®</sup> WallMount 280Ah RS232 Update Guide to complete the update.



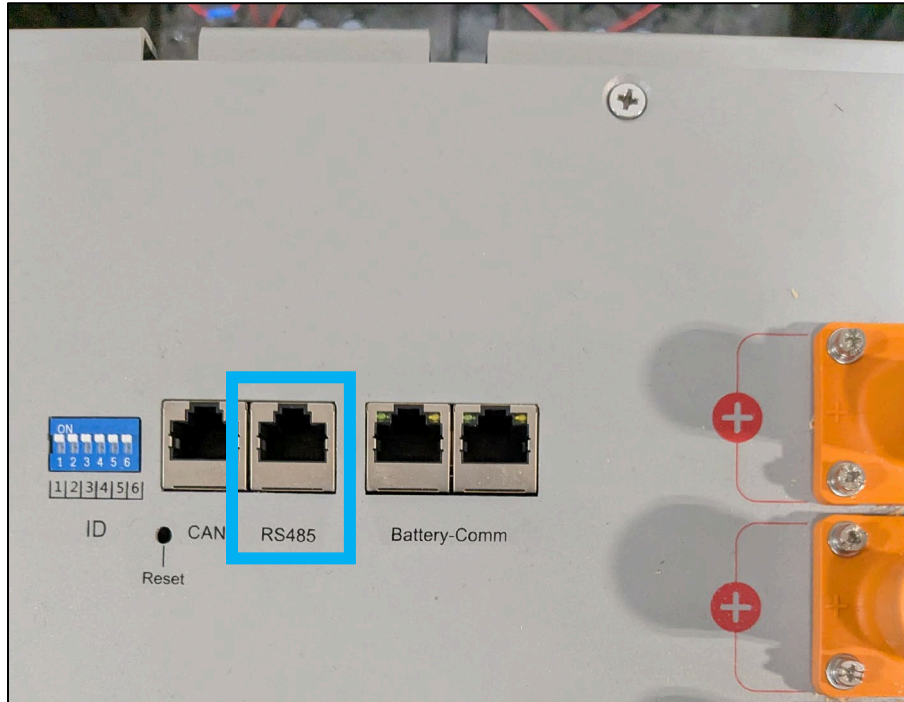
### CAUTION:

- Remove all CAT communication cables between the battery-comm ports that parallel each battery. Failure to do so will result in a soft-bricked BMS when attempting to update multiple batteries at once.
- Only power on the BMS of the battery being updated. Attempting to update multiple batteries at once will result in a soft-bricked BMS.
- Do not disconnect the RS485 cable during the update or have the device performing the update lose power. This will lead to a soft-bricked BMS.

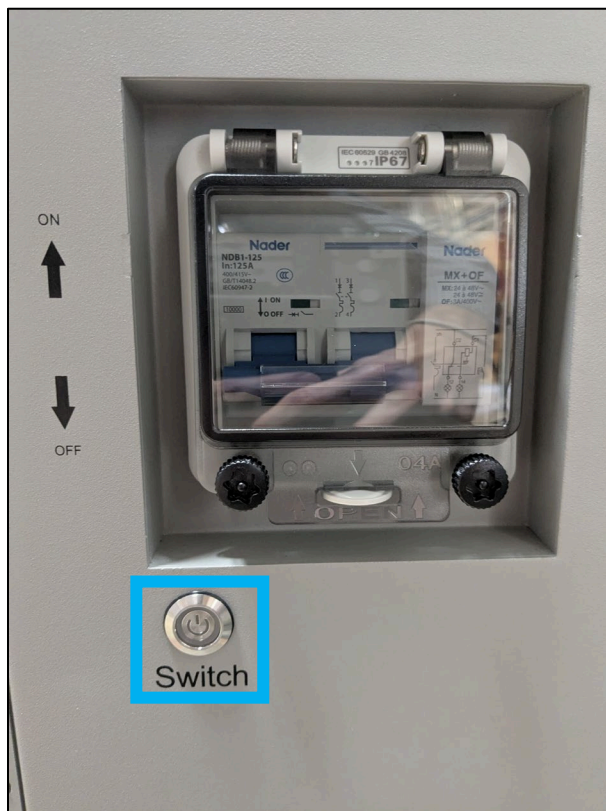
Before starting the update, navigate to [www.eg4electronics.com](http://www.eg4electronics.com) and go to the product page. Select the battery needing the update.

To find the latest firmware, scroll down and locate the “Firmware” section. Select the firmware file needed and start the download. Once the download is complete, extract all files to an easily accessible location. These files will be used throughout the update process.

1. Using an RS485 (RJ45 Pins 1-B, 2-A) to USB-A adapter, connect the RS485 port of the battery to a USB-A port on a Windows computer.



- Power on only the battery BMS with the On/Off button on the side of the battery.



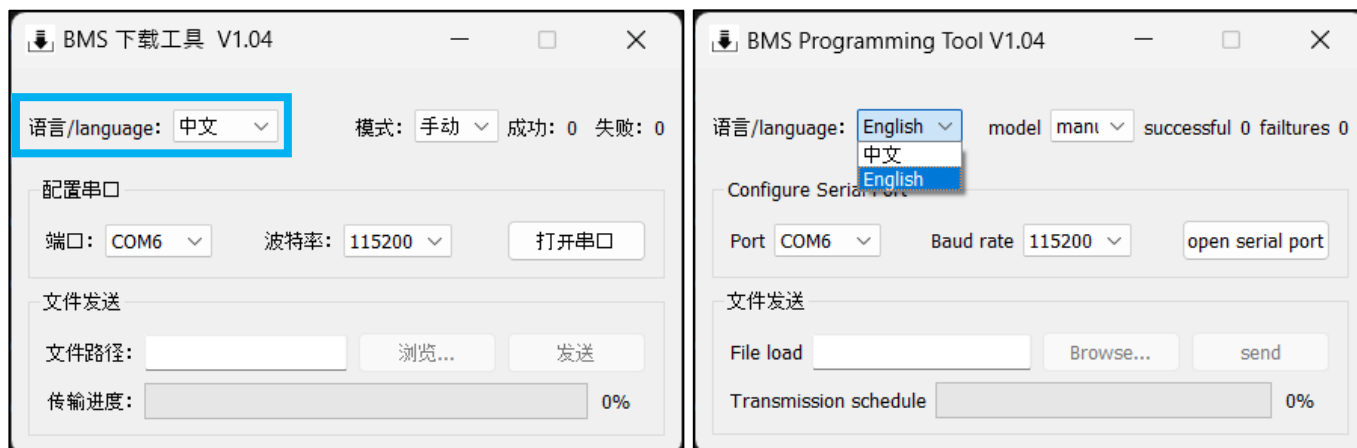
- Open the “Indoor Wallmount RS485 Updater” folder.

Name	Status	Date modified	Type	Size
Indoor Wallmount RS485 Firmware	✓	2025-10-03 10:50 AM	File folder	
Indoor Wallmount RS485 Updater	✓	2025-10-03 10:50 AM	File folder	
Cables Needed For Updating EG4 Electro...	✓	2025-04-14 11:43 AM	Microsoft Edge PD...	30 KB

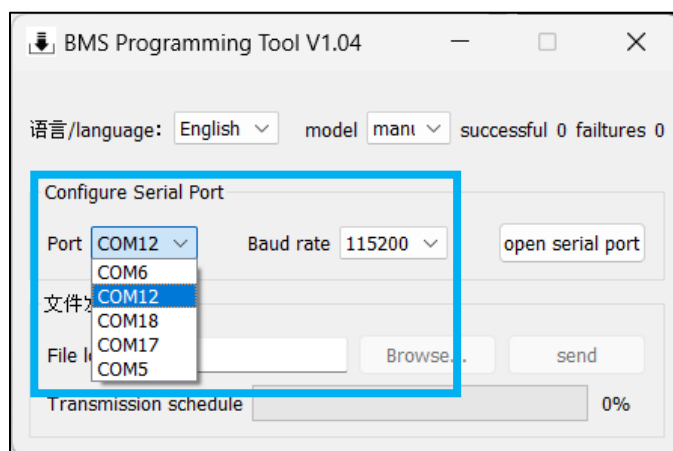
- Open the “Indoor WallMount RS485 BMS updater V1.04.exe”.

Name	Status	Date modified	Type	Size
iconengines	✓	2025-10-03 10:50 AM	File folder	
imageformats	✓	2025-10-03 10:50 AM	File folder	
platforms	✓	2025-10-03 10:50 AM	File folder	
styles	✓	2025-10-03 10:50 AM	File folder	
translations	✓	2025-10-03 10:50 AM	File folder	
D3Dcompiler_47.dll	✓	2025-10-03 10:50 AM	Application extens...	3,386 KB
Indoor Wallmount RS485 BMS updater V1.04.exe	✓	2025-10-03 10:50 AM	Application	88 KB
libEGL.dll	✓	2025-10-03 10:50 AM	Application extens...	29 KB

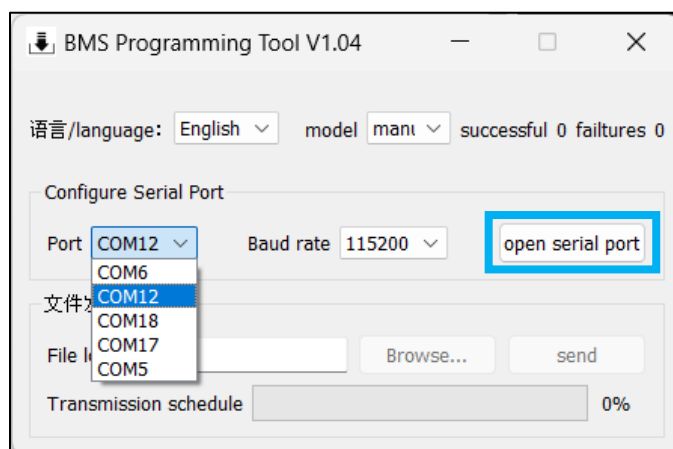
5. Change the language to “English” if needed.



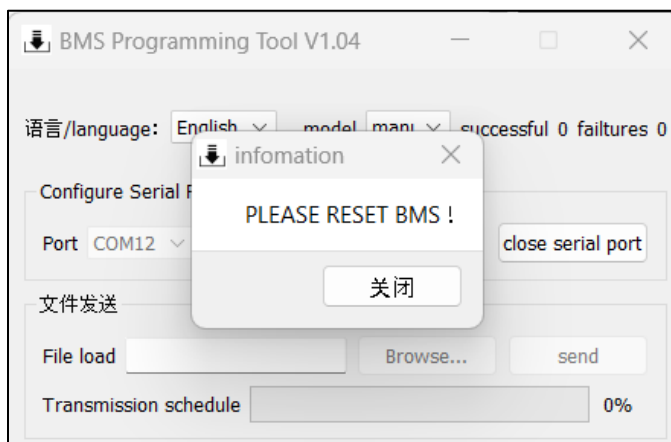
6. Confirm the COM port is set to the correct port number that Windows has assigned to the RS485 cable in Device Manager. Also, confirm the Baud-Rate is set to “115200”.



7. Select “open serial port”.



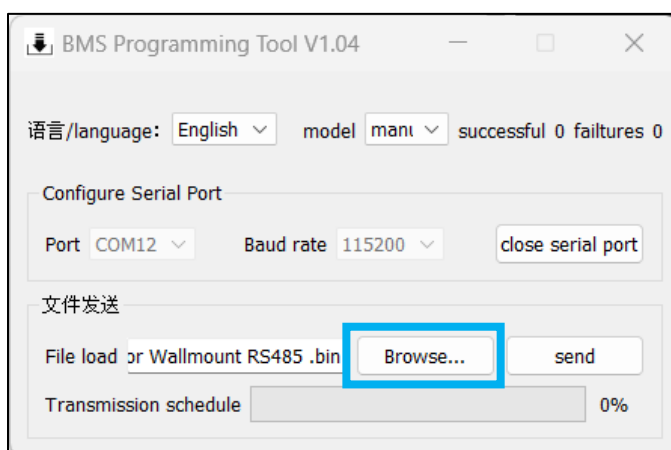
- A dialogue box stating, “PLEASE RESET BMS!” will appear. Power off the BMS switch, then power it back on. This box will automatically close once the BMS is reset.



## NOTE:

If the dialogue box does not automatically close, the update failed. Restart the process from step 7.

- The “Browse...” button will populate. Select it and choose the firmware file to flash.



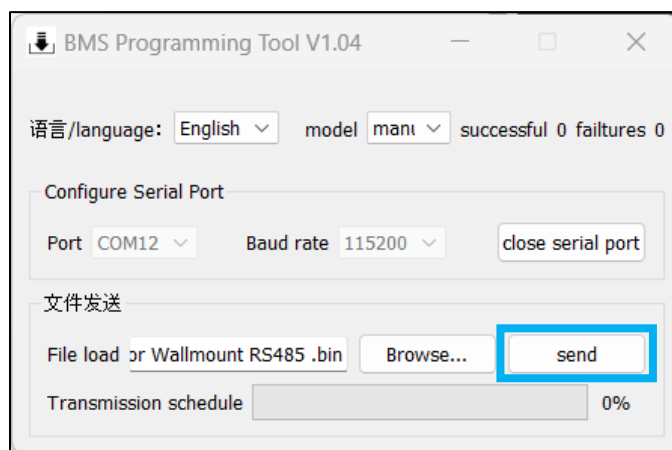
- The Windows File Explorer will automatically open. Navigate to the “Indoor Wallmount RS485 Firmware” folder.

Name	Status	Date modified	Type	Size
Indoor Wallmount RS485 Firmware	✓	2025-10-03 10:50 AM	File folder	
Indoor Wallmount RS485 Updater	✓	2025-10-03 10:50 AM	File folder	
Cables Needed For Updating EG4 Electro...	✓	2025-04-14 11:43 AM	Microsoft Edge PD...	30 KB

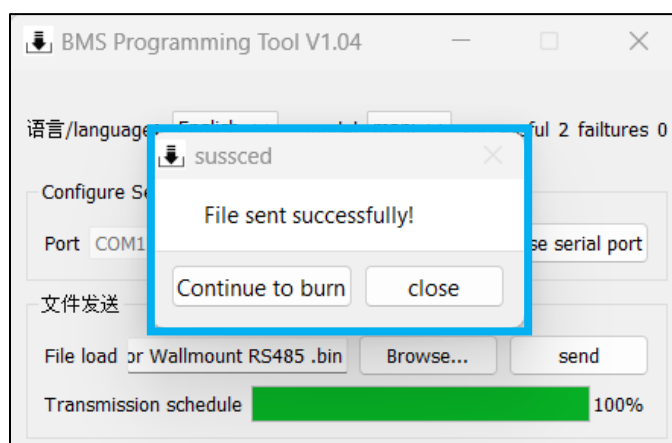
11. Select the .bin file in the RS485 firmware folder.

Name	Status	Date modified	Type	Size
Z02T04 51.2V280ah Indoor Wallmount R...	✓	2025-10-03 10:50 AM	BIN File	133 KB

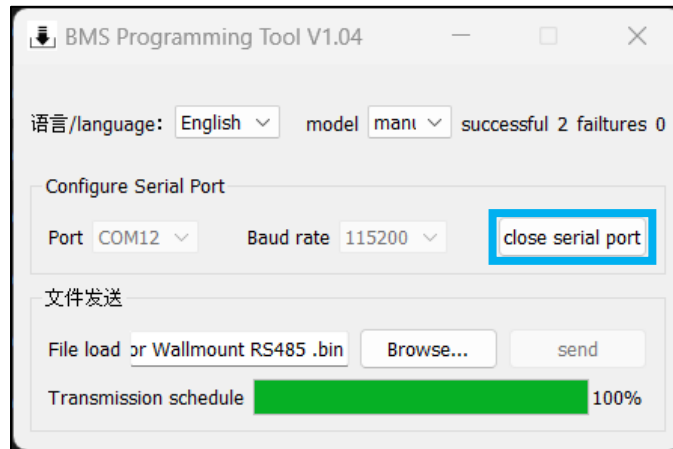
12. After the .bin file has been loaded into the updater, select “send”.



13. The “Transmission schedule” progress bar will begin to fill. Once complete, a dialogue box stating, “File sent successfully!” will appear. Select close on this dialogue box.



14. When complete, select “close serial port” and exit the application.



### REMINDER:

This is a two-part update. Please refer to the EG4 WallMount 280Ah RS232 Update Guide to complete the update.

# EG4

ELECTRONICS

support@eg4electronics.com  
(903) 609-1988  
www.eg4electronics.com